

Figure 1. Types de fermentation et cinétique de croissance en fermentation discontinue

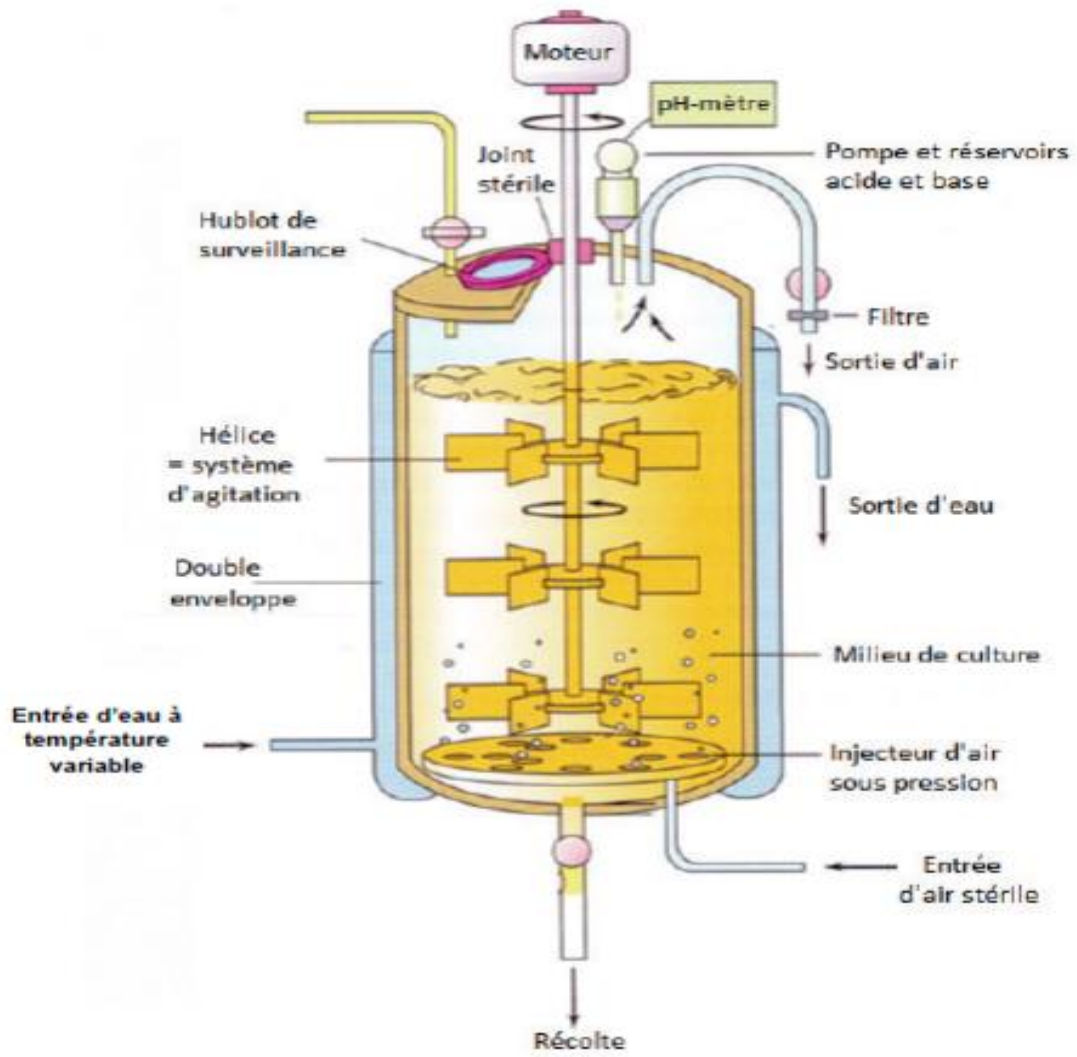


Figure .2 Bioreacteur

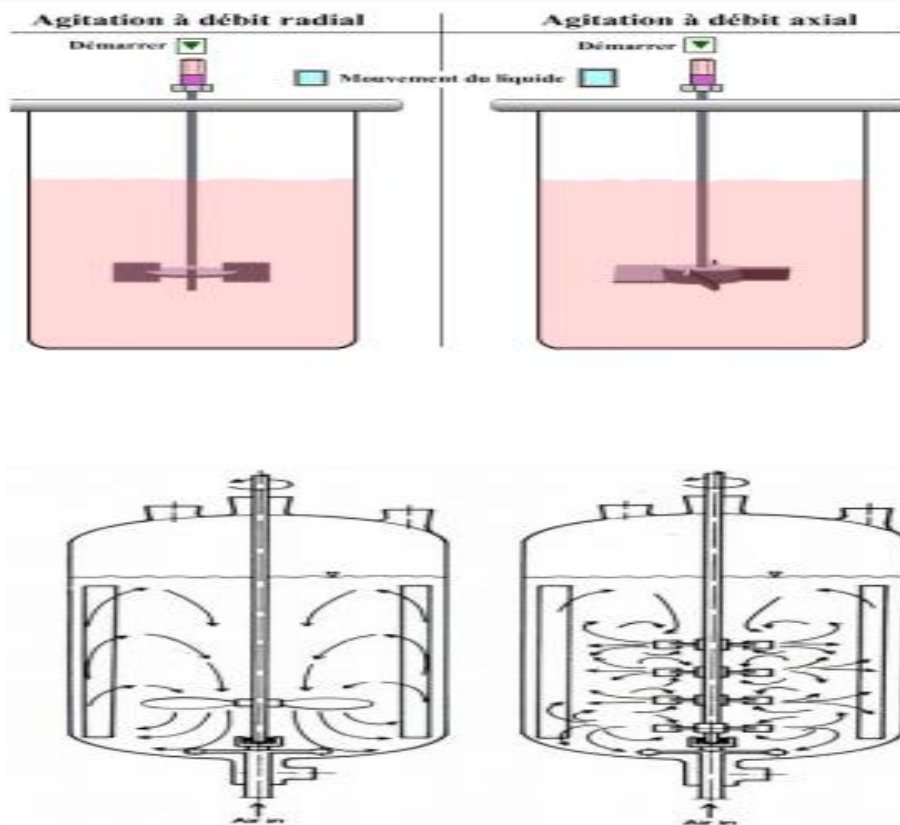


Figure 3 : Agitation rotative axiale (hélice), radiale (pales ou turbines)

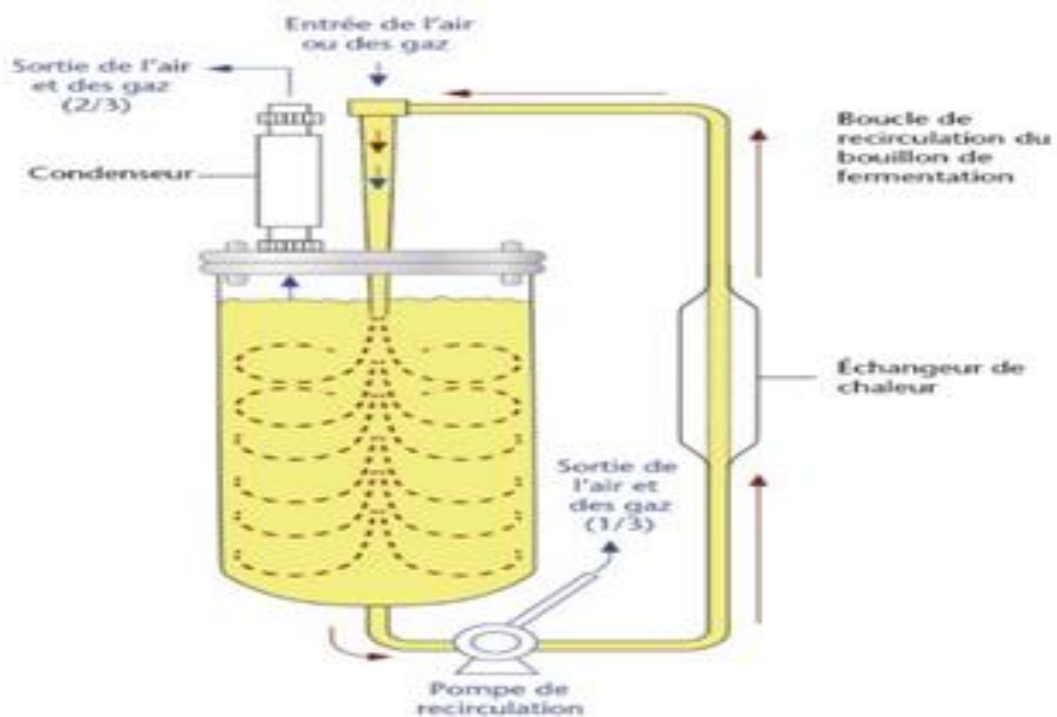
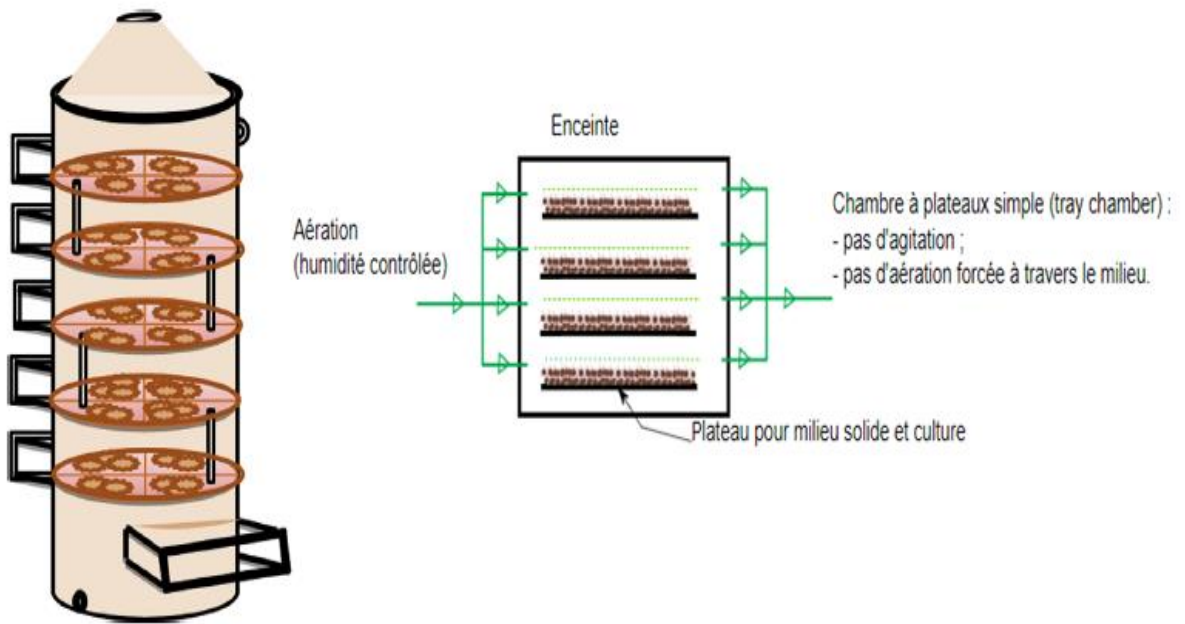
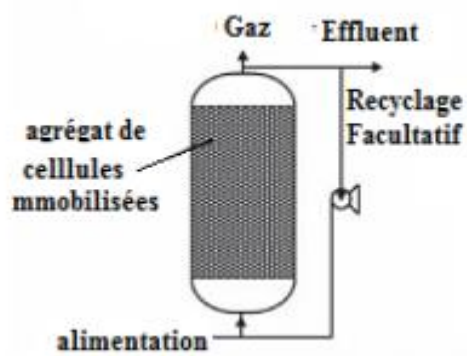


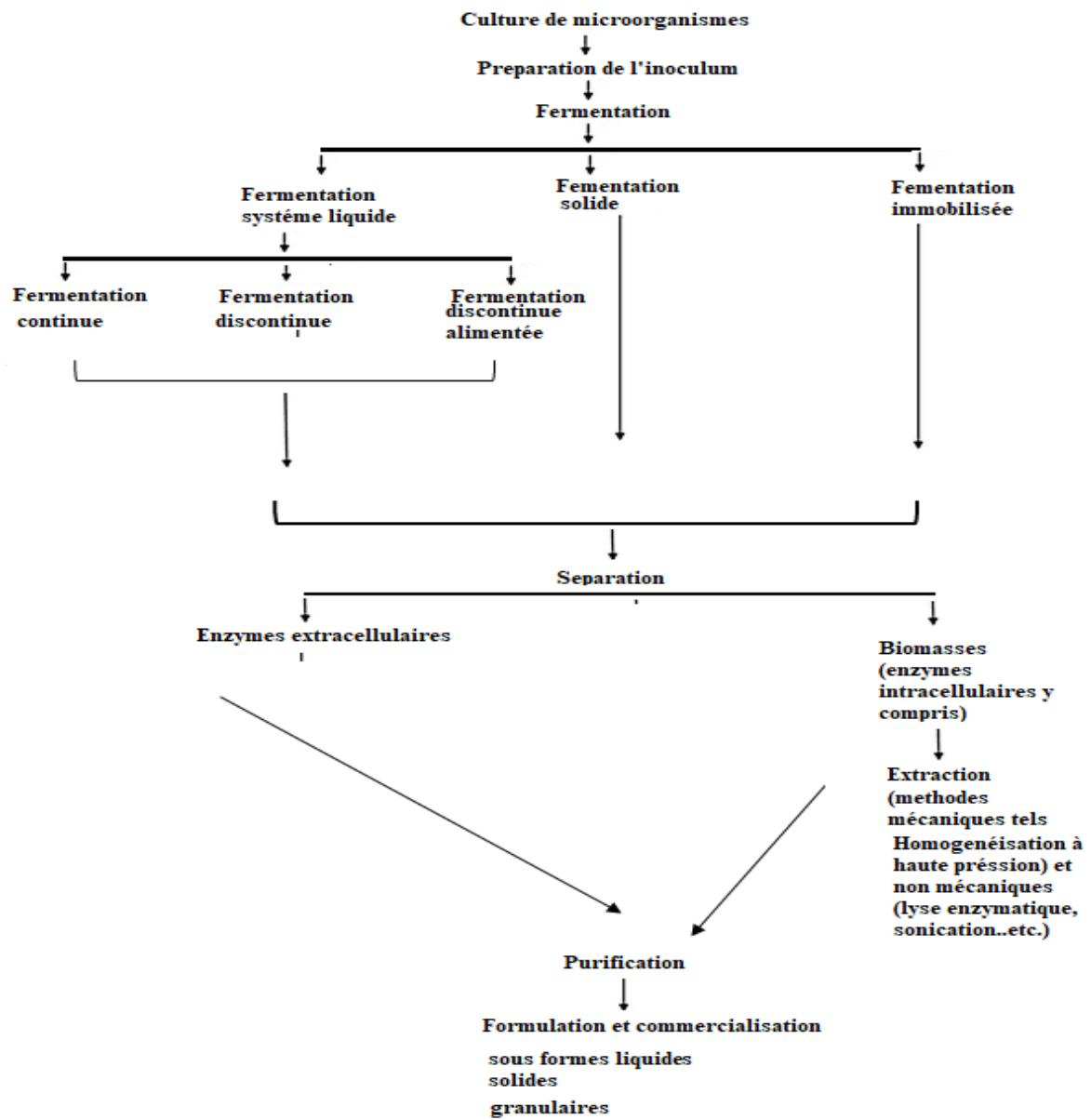
Figure .4 Bioréacteur à agitation hydraulique



**Figure 5.** Bioréacteurs à plateaux



**Figure 6.** Bioréacteurs à lit fluidisé



**Figure 7.** Etapes de production des enzymes par fermentation