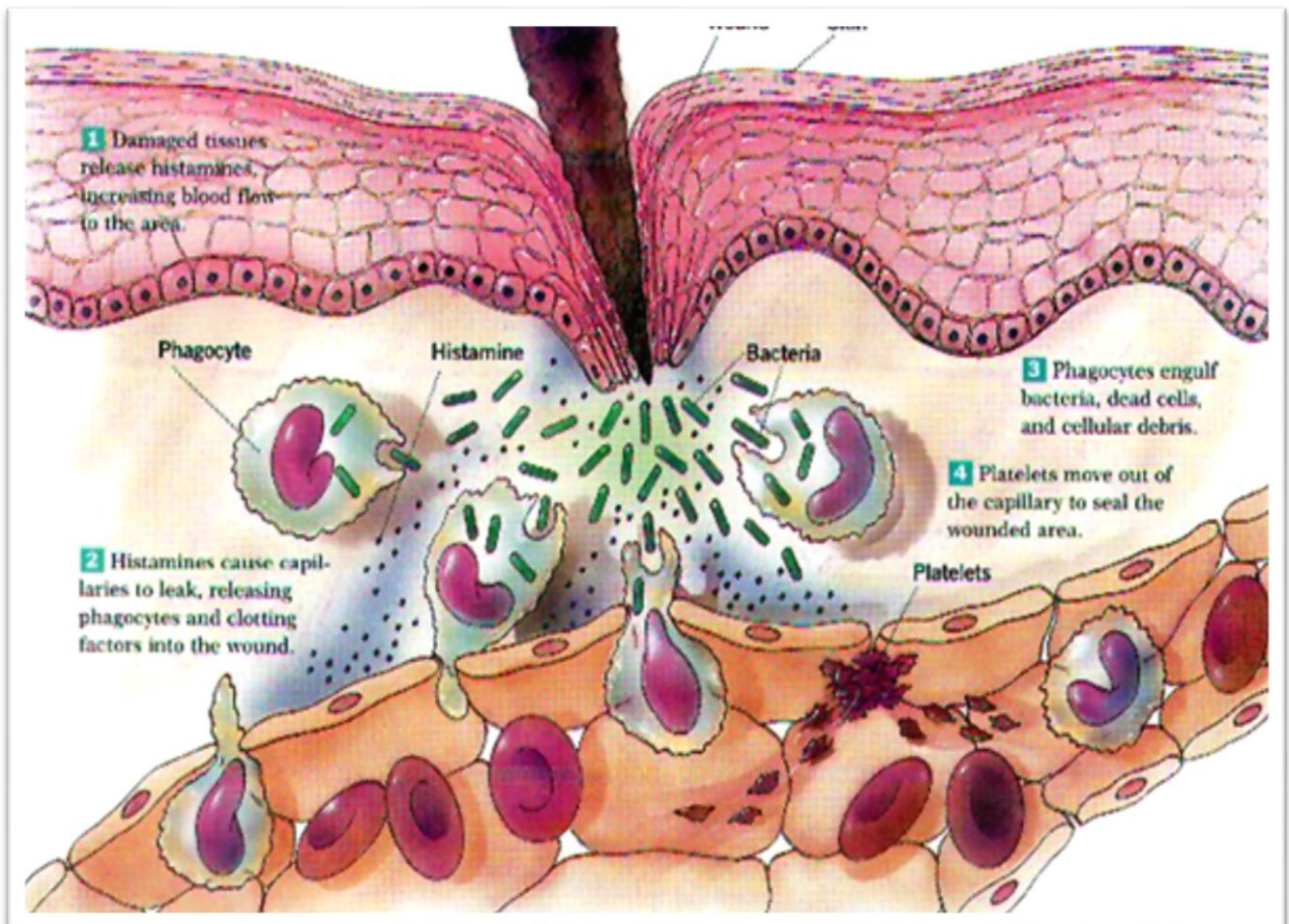
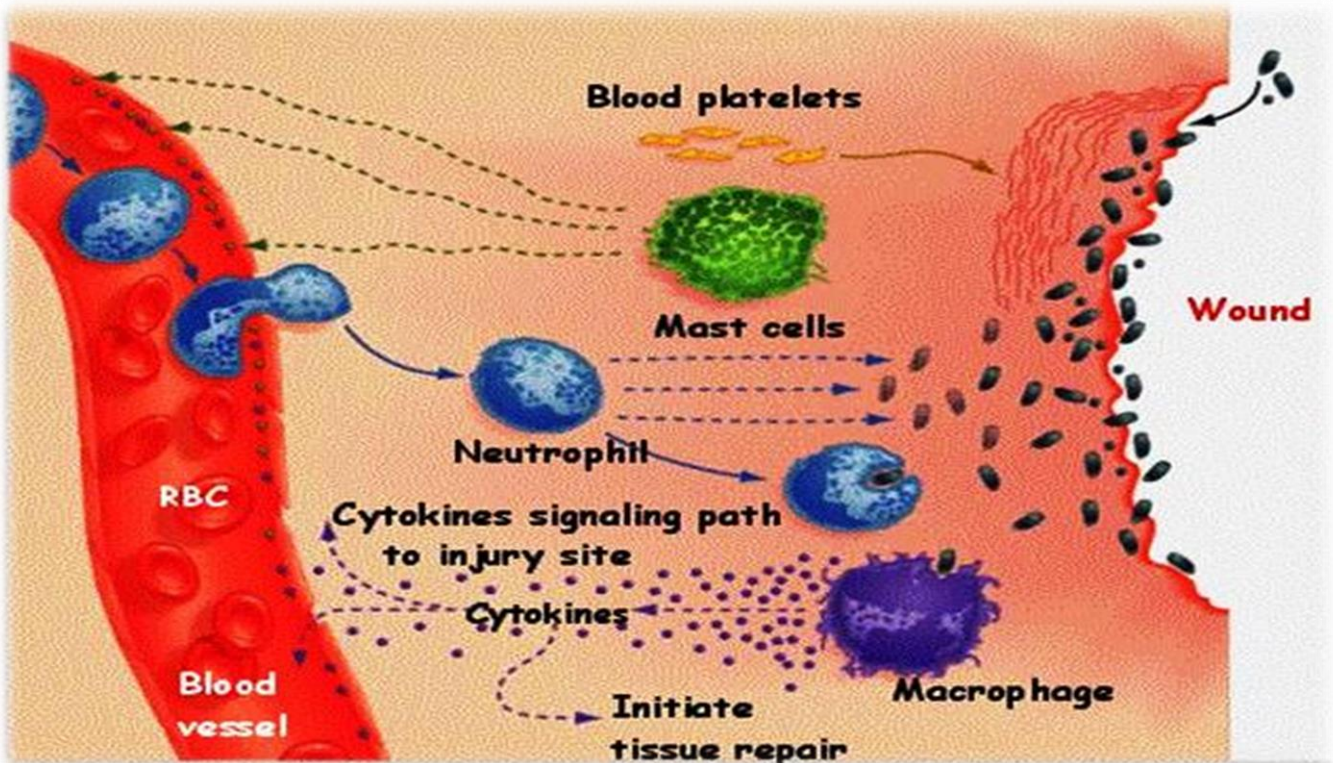
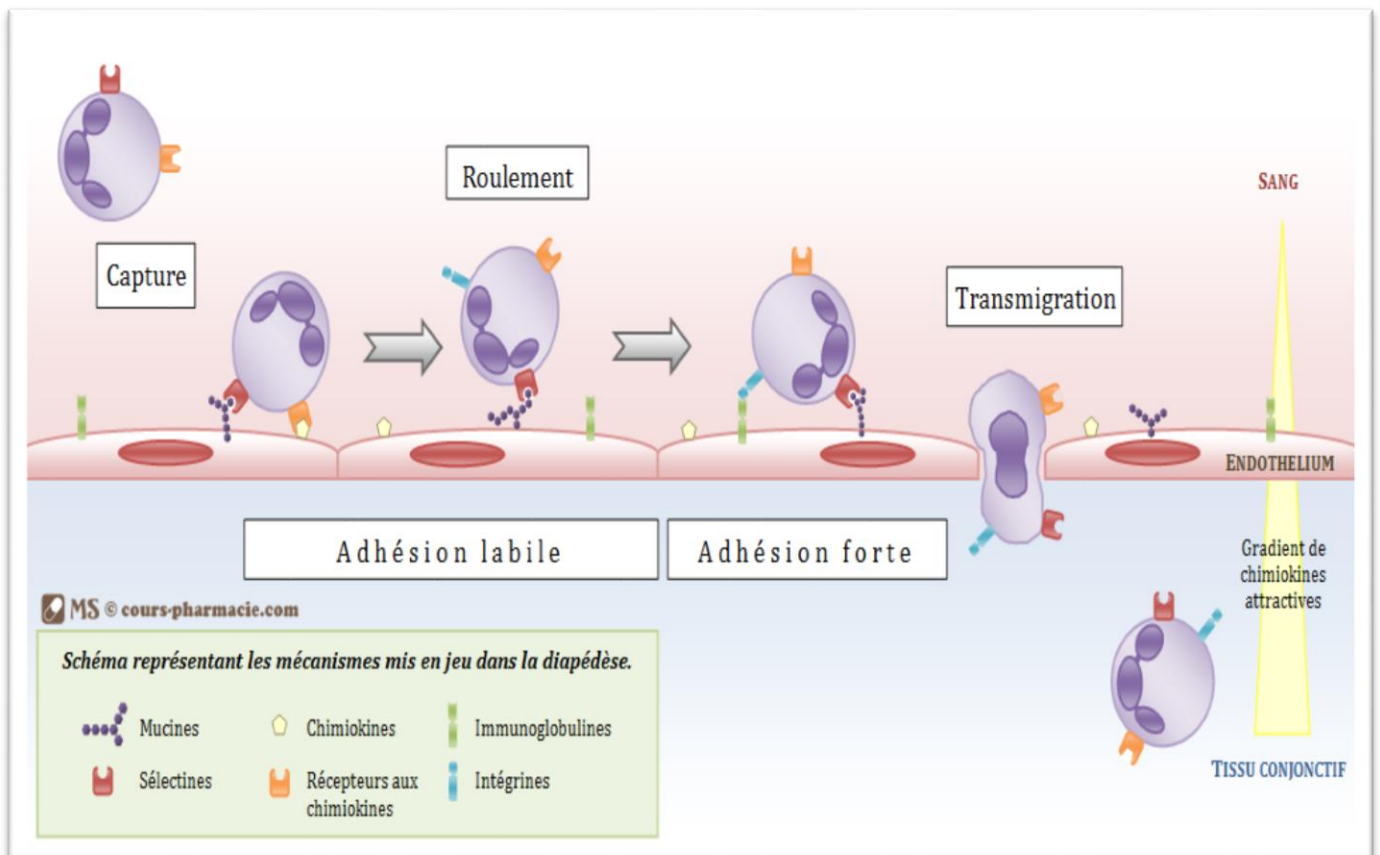
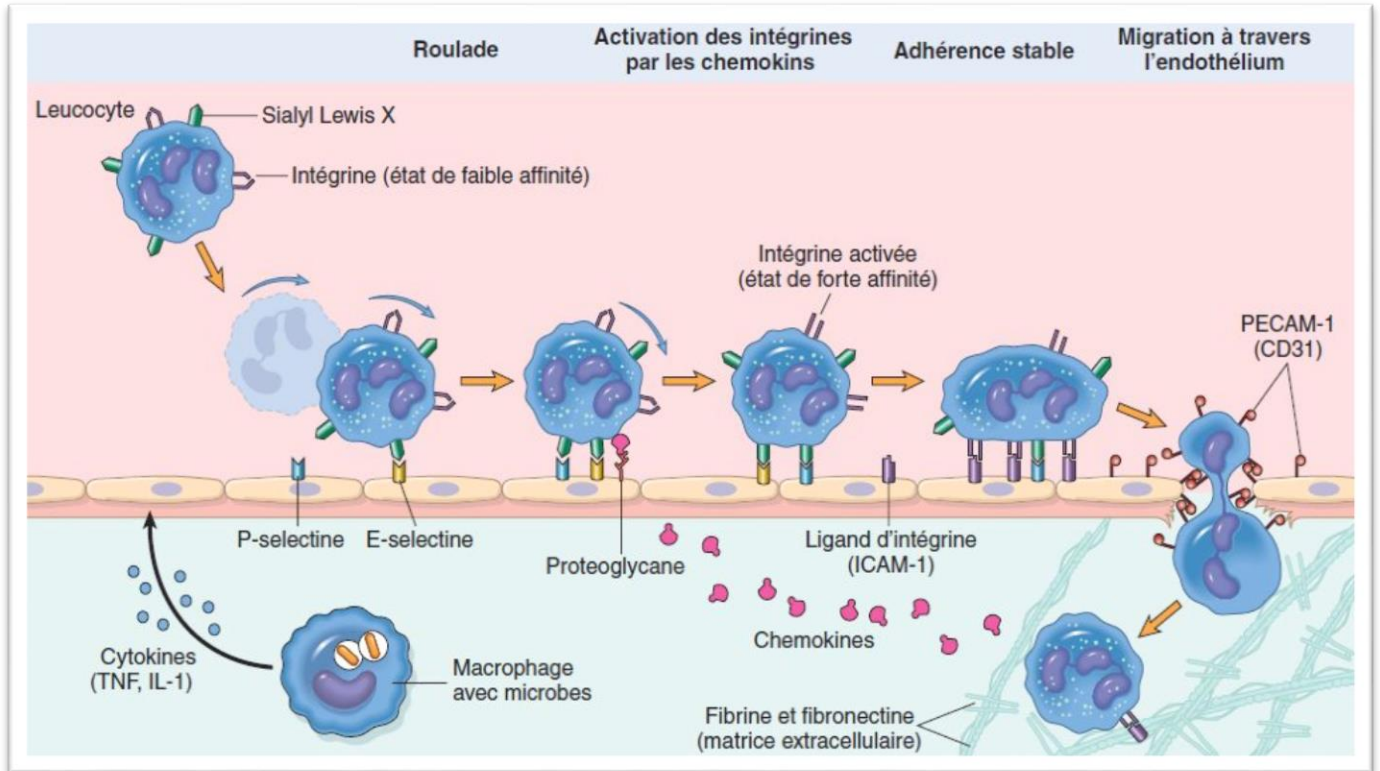


La réaction inflammatoire :

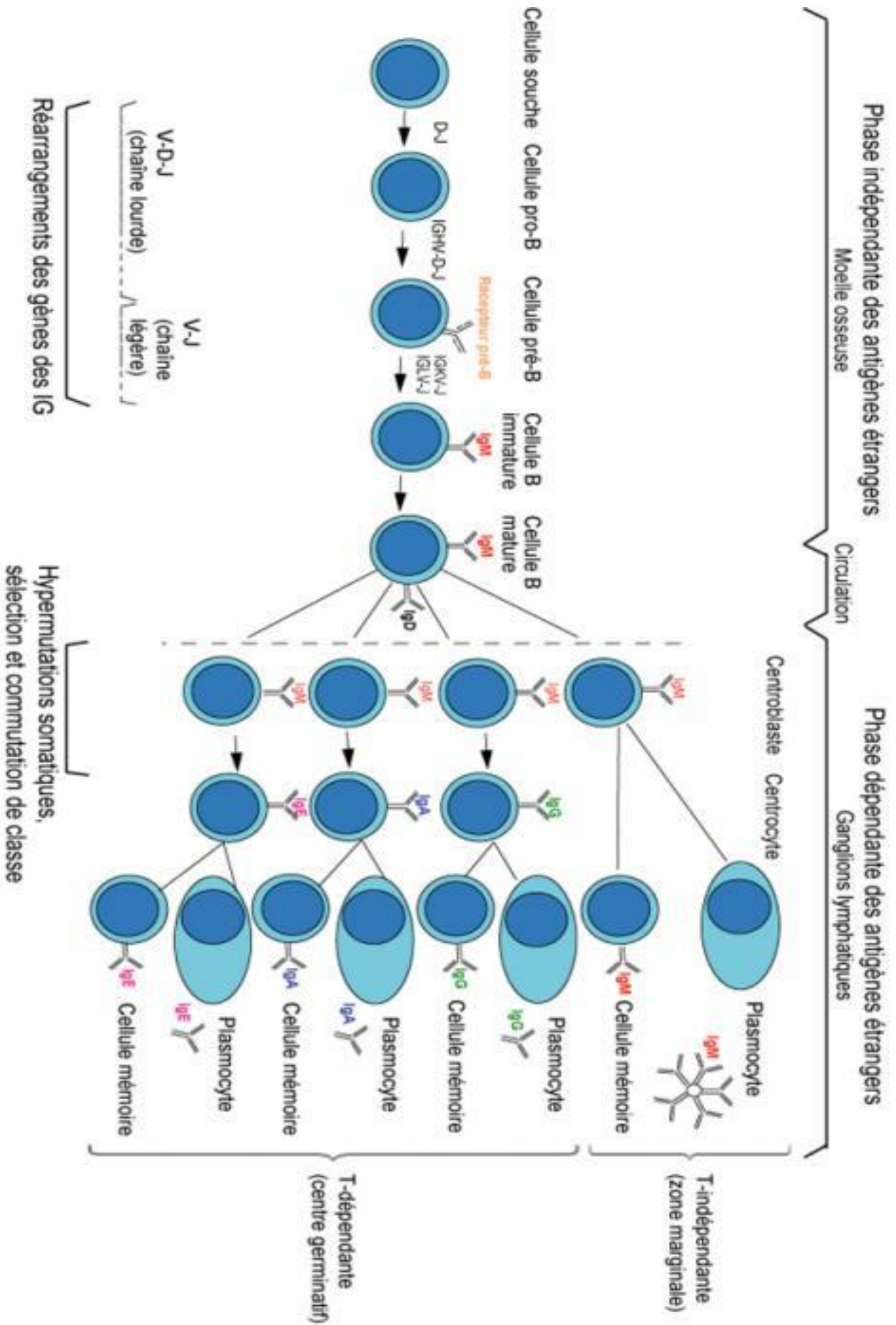




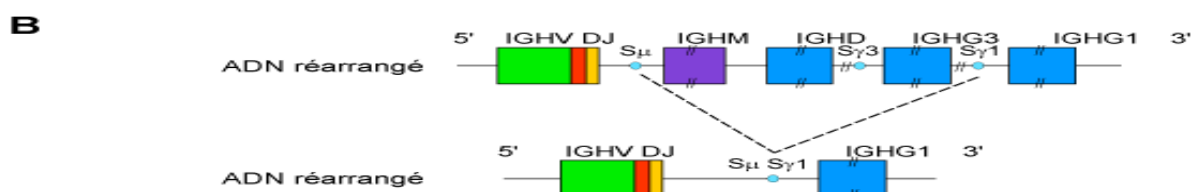
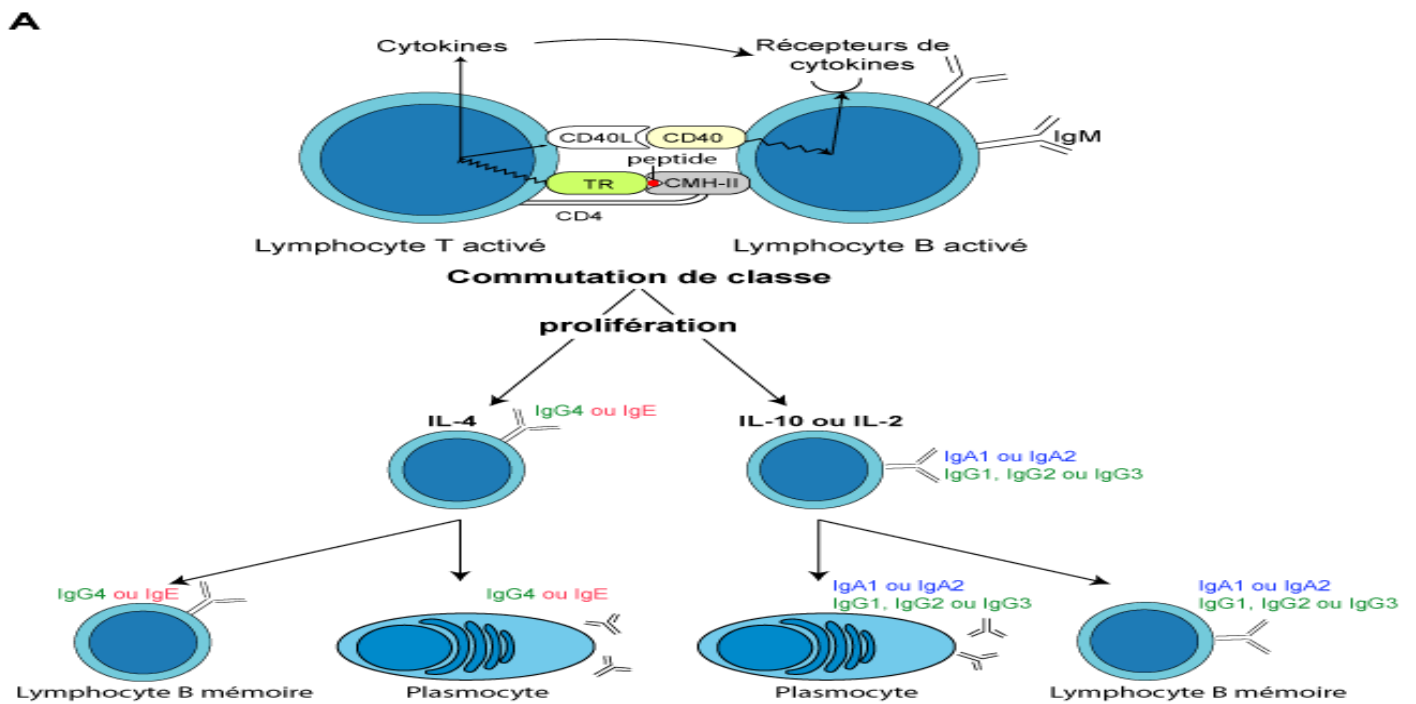
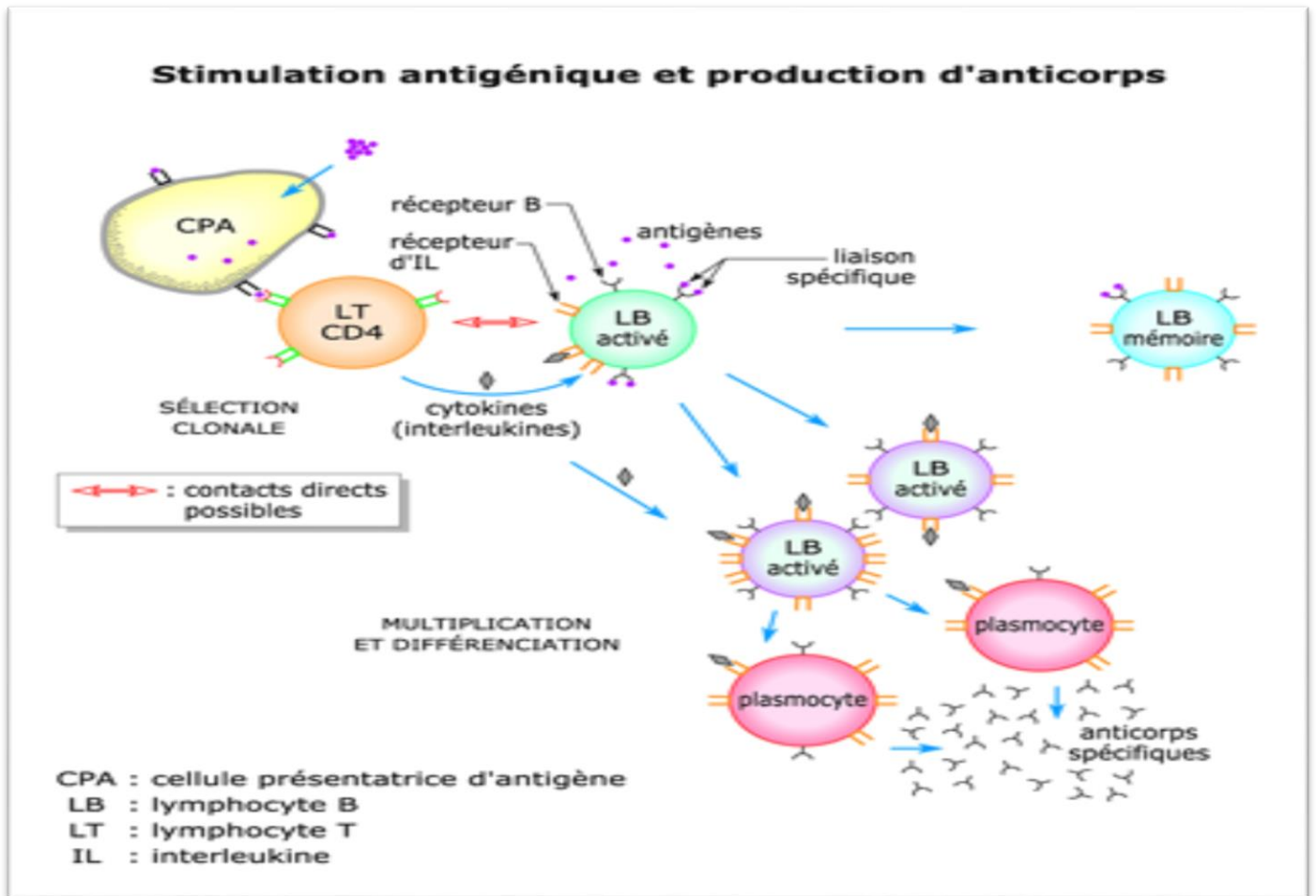
La diapédèse :



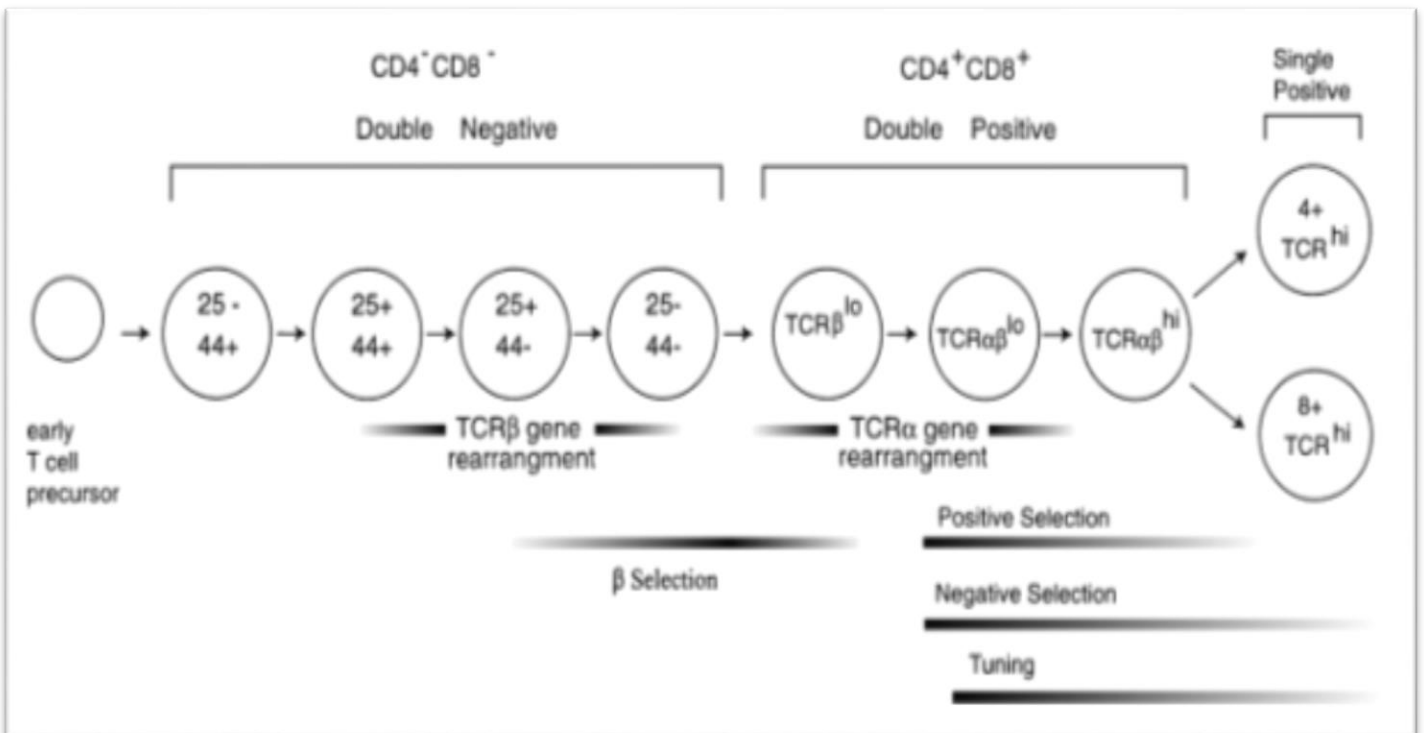
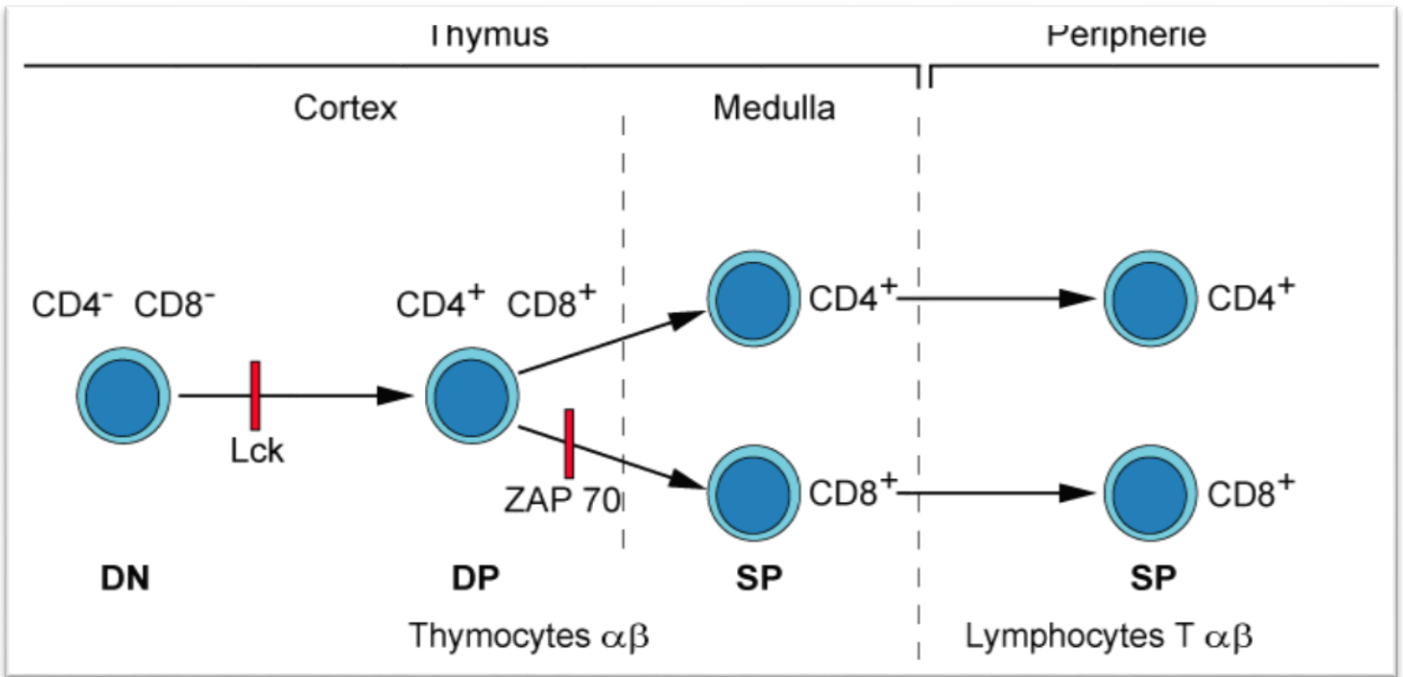
Maturation des LB et activation:



La coopération des LTh et LB :

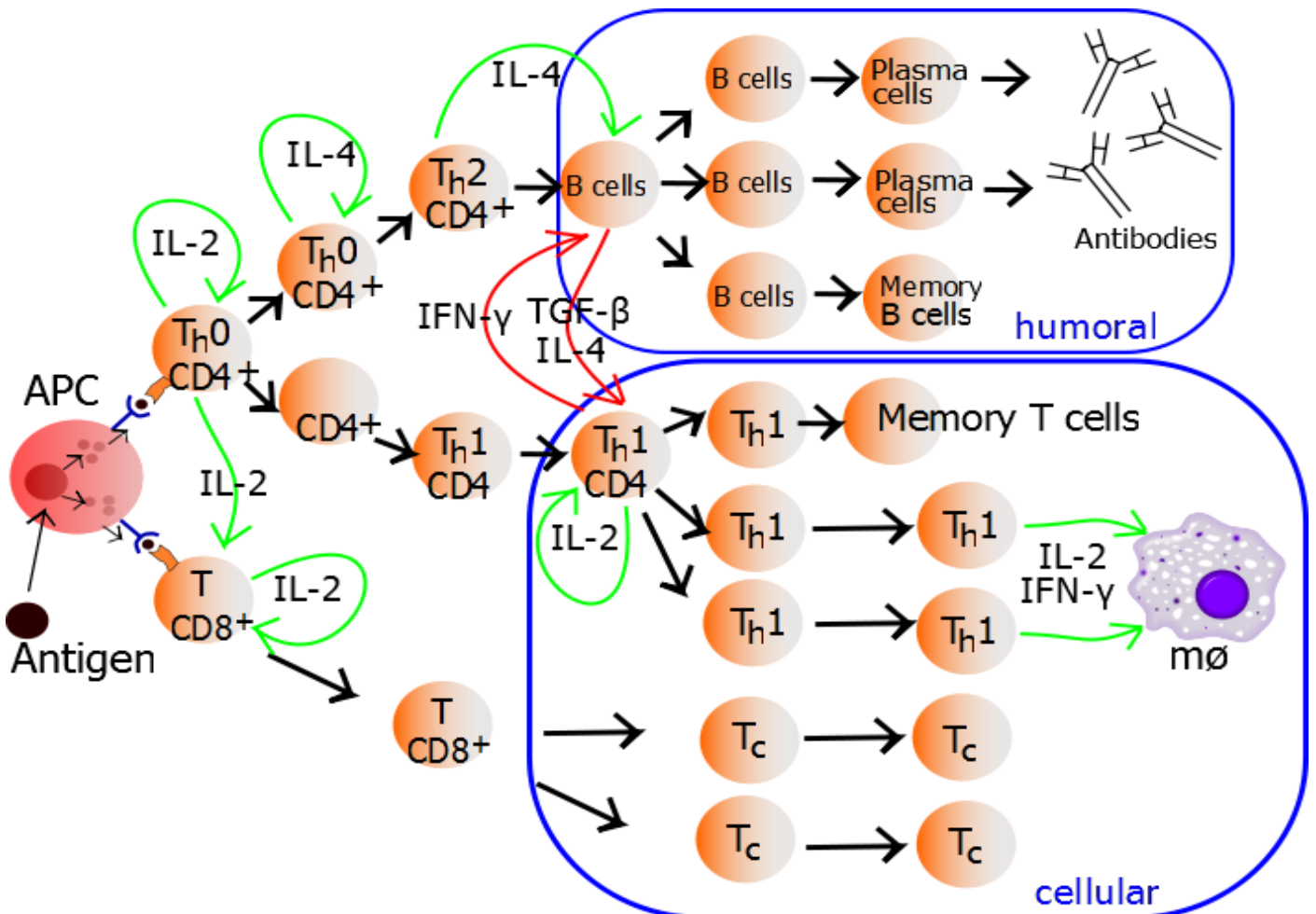
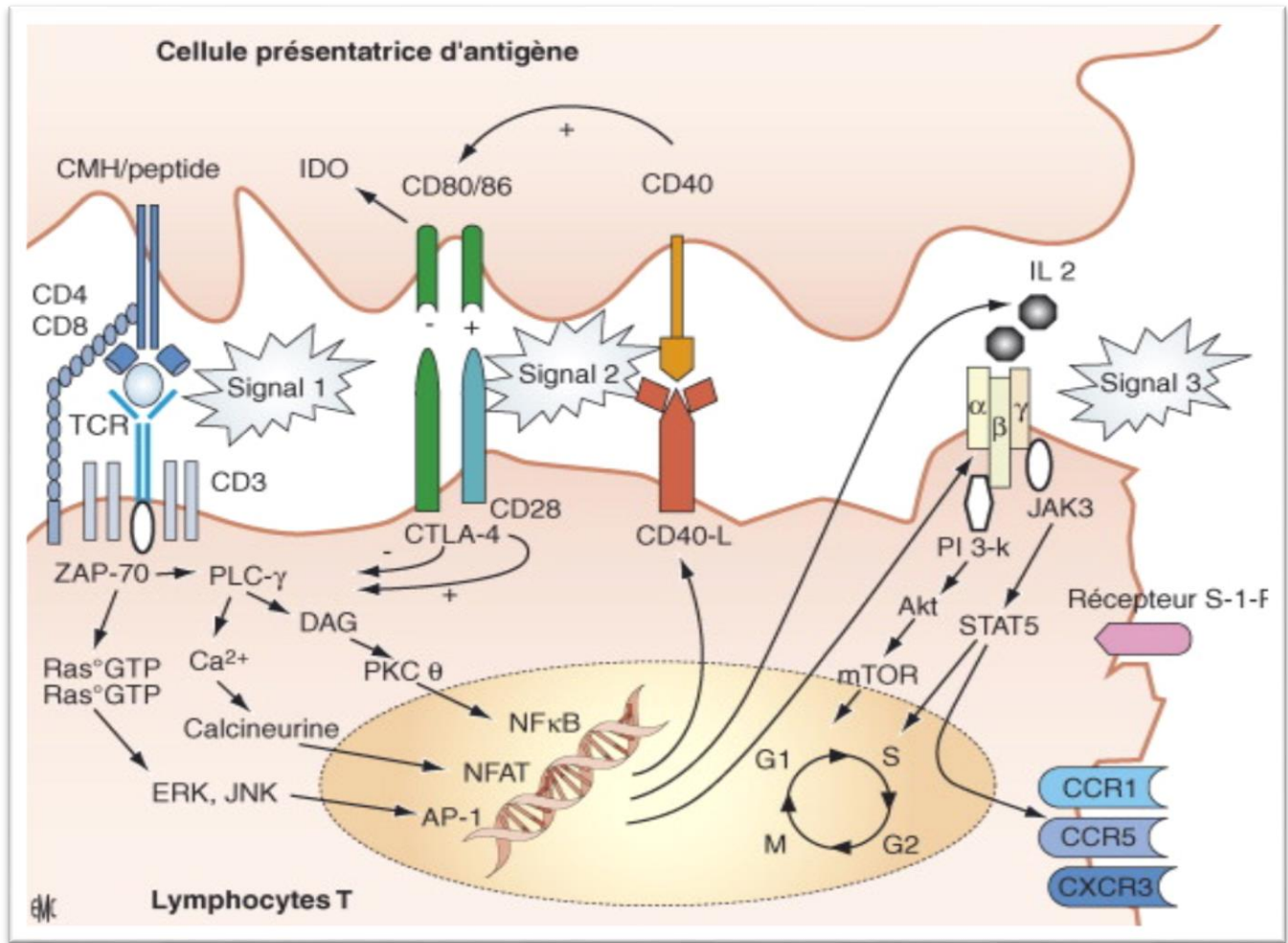


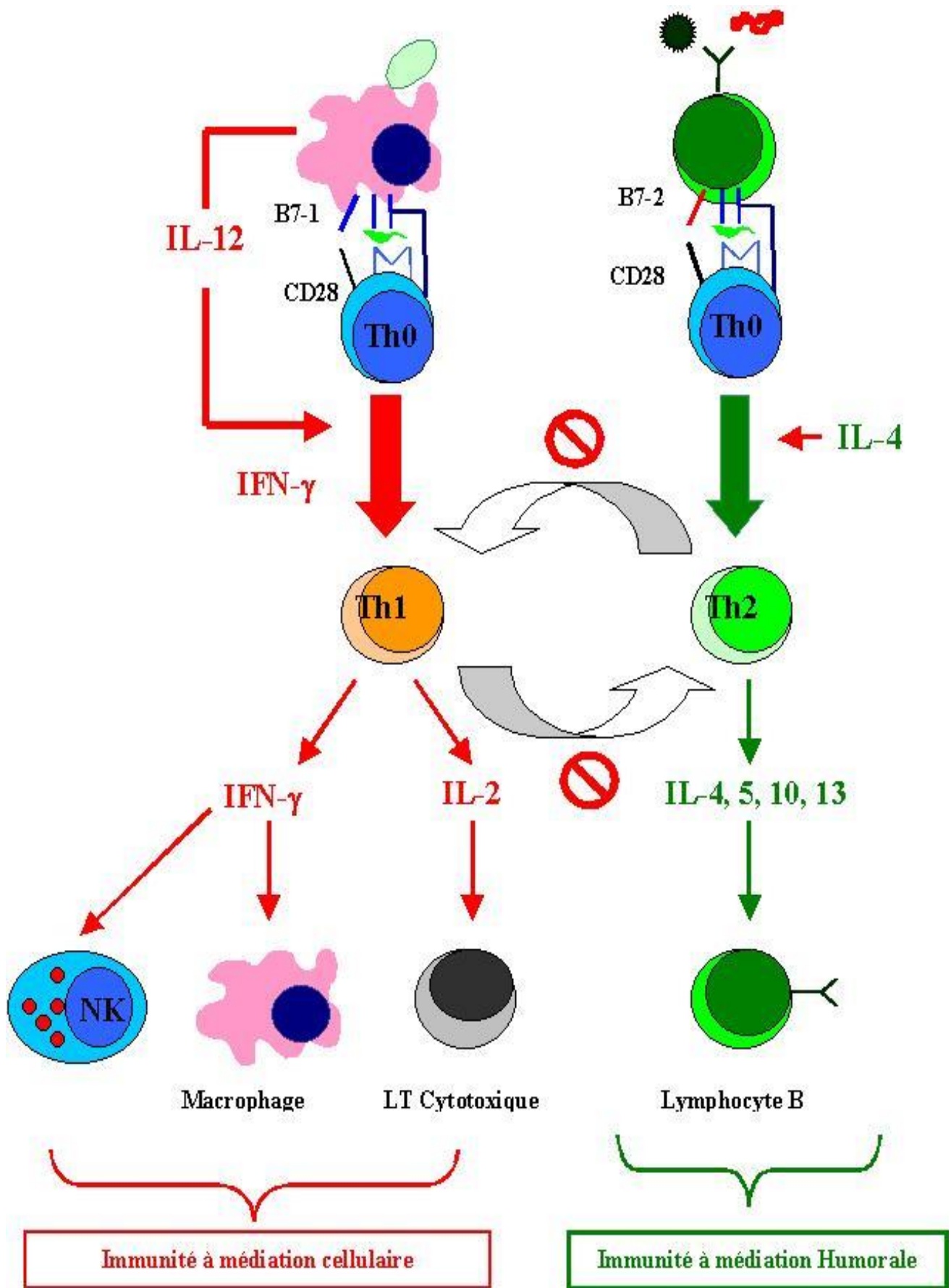
La maturation des lymphocytes T et leur sélection :



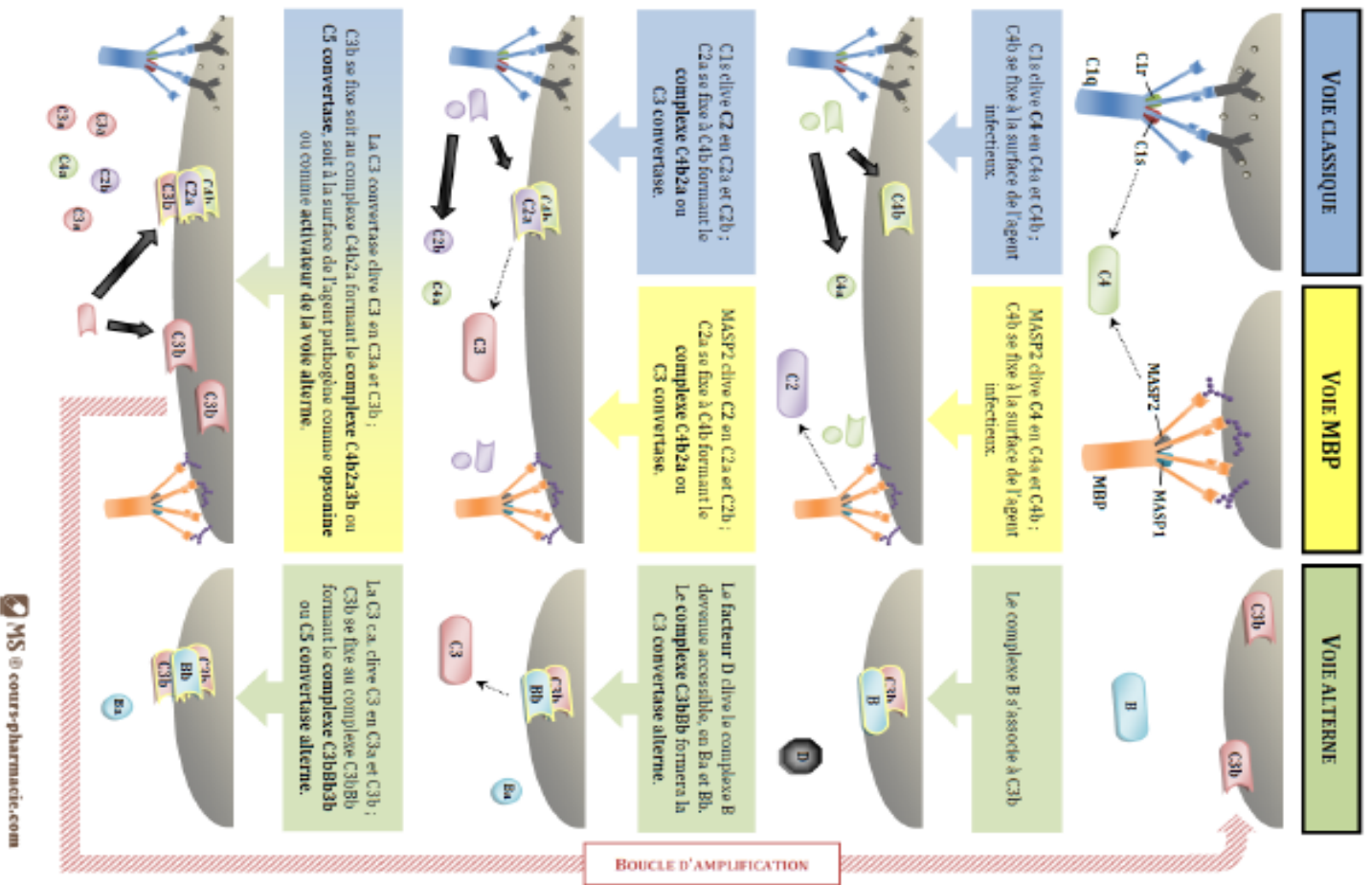


Signalisation et Activation des LT :





Le complément :



Schema représentant les mécanismes rentrant en jeu dans les différentes voies d'activation du complément : la voie classique, la voie MBP et la voie alterne.

