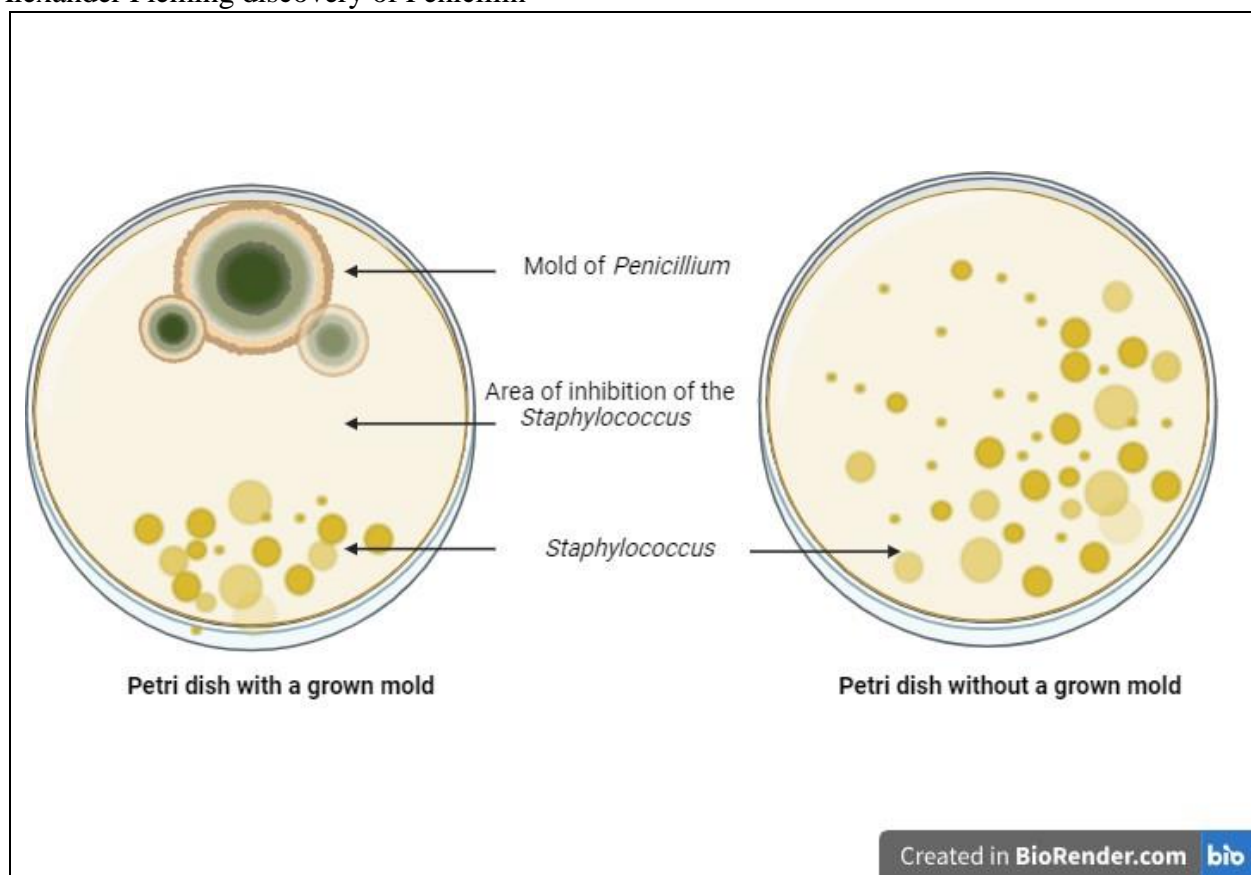


Module : Techniques de Communication et d'expression III

Tutorial 02
The Scientific Method

The image below shows a schematic representation of one of biology's greatest finding, Sir Alexander Fleming discovery of Penicillin



Analyze the figure and deduce the steps followed by Sir Alexander Fleming in his scientific research.

Module : Techniques de Communication et d'expression III

Observation: In 1928, Sir Alexander Fleming was studying Staphylococcus bacteria growing in culture dishes. He noticed that a mold called Penicillium was also growing in some of the dishes. He also observed that a clear area appeared around the mold since all the bacteria that had grown in this area had died. In contrast no clear areas were present in the culture dishes with no growing mold.

Hypothesis:

Experimentation:

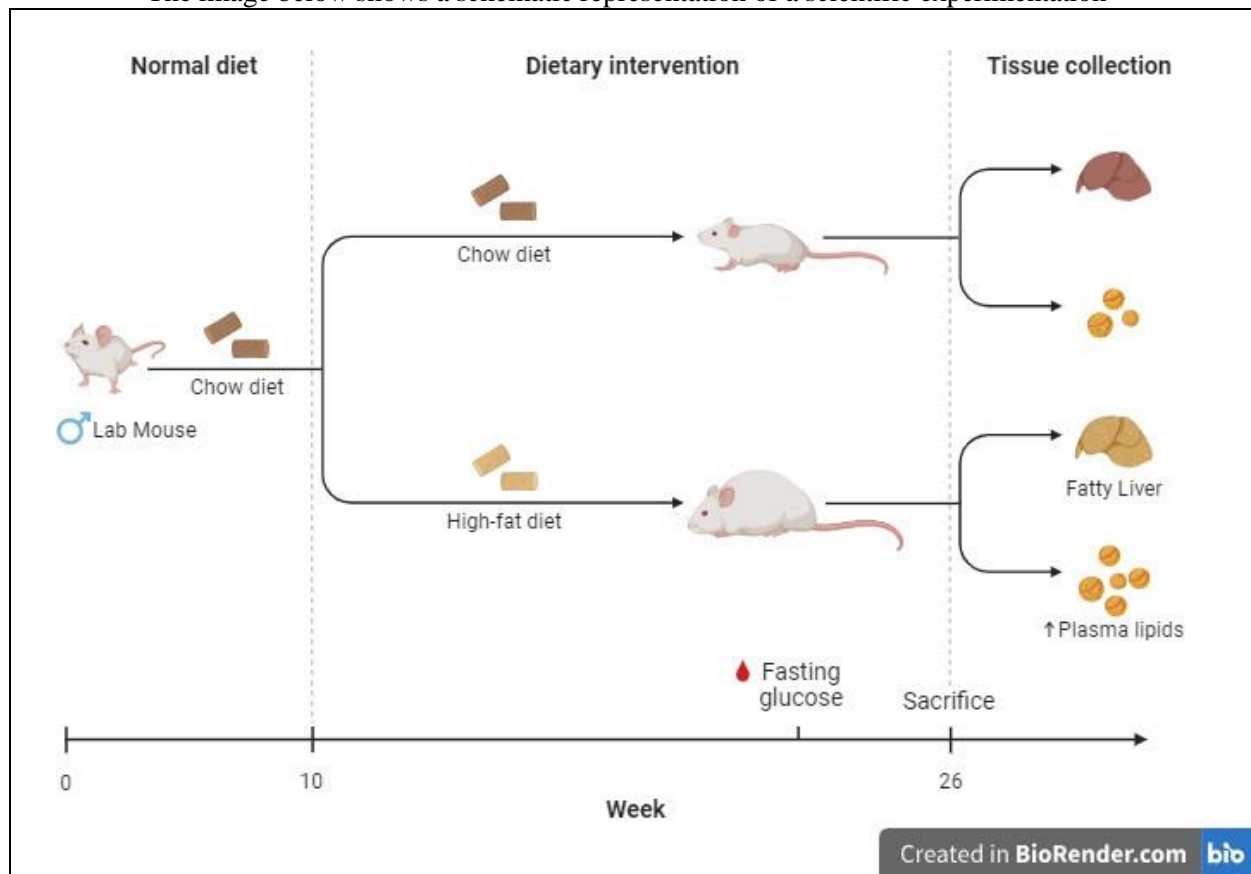
Results:

Conclusion:

Module : Techniques de Communication et d'expression III

Directed Work 01 *The Scientific Method*

The image below shows a schematic representation of a scientific experimentation



Analyze the figure and deduce the hypothesis, the results and the possible conclusion.

Module : Techniques de Communication et d'expression III

Hypothesis

Results

Conclusion