

Anuḍaf n unasiw «*anasunic*»  
i tsefsayin Unicode  
(Windows - AZERTY)

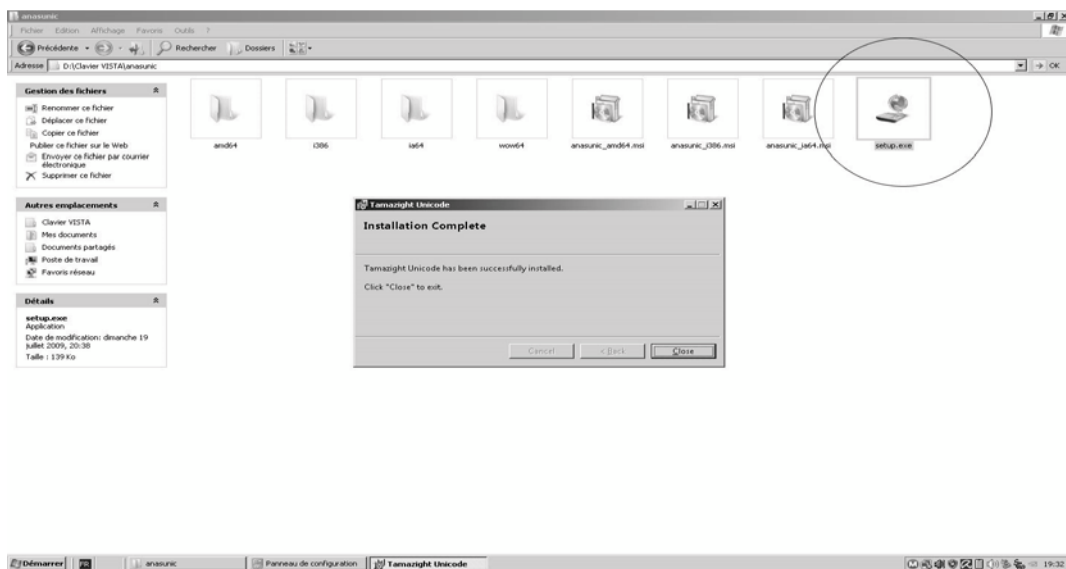
Anuḍaf-agi i tira s tmaziɣt deg **Windows** yers yef llsas n «**unicber.msi**» deg wayen yerzan tarusi n yisekkilen yef tqeffalin n unasiw. Ayen yettwarun s (**unicber.msi**) di Windows XP nezmer ad t-nesseyti, ad as-nernu, ad as-nessenyes s unuḍaf (**anasunic**) di Win Vista, Win 7 ney Win 8.

D anuḍaf n unasiw yetteddun yef Win XP, Win Vista, Win 7 akked Win 8.

Mi tessulim anuḍaf-agi n unasiw «**anasunic**» yef uselkim-nwen, tzemrem ad tarum s tsefsayin Unicode yecban *Arial Unicode MS* i d-yetteddun di Windows, ney *Garamond Unicode*, *Times New Roman*, *Arial*, *Footlight MT Light Unicode*...

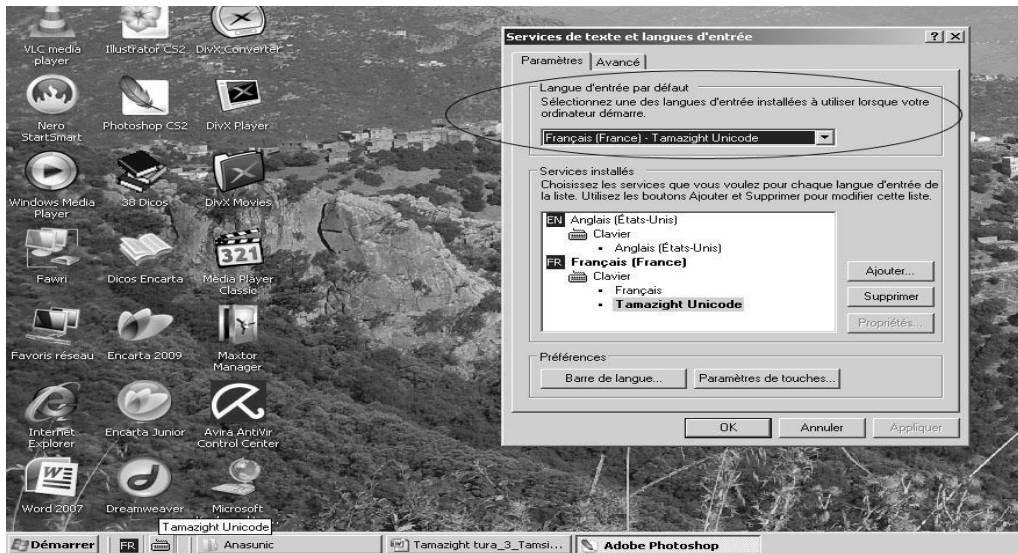
**Tamawt :** *Ismawen n tsefsayin-agi merra keffun s «...Unicode» i wakken ad tessemgirdem gar-asent akked tiyaḍ.*

\*  
\* \*



Ad isit usenselkam snat tikkal yef «**setup.exe**», mi d-tban tugna-agi, ad isit yef «**Close**».

\*  
\* \*

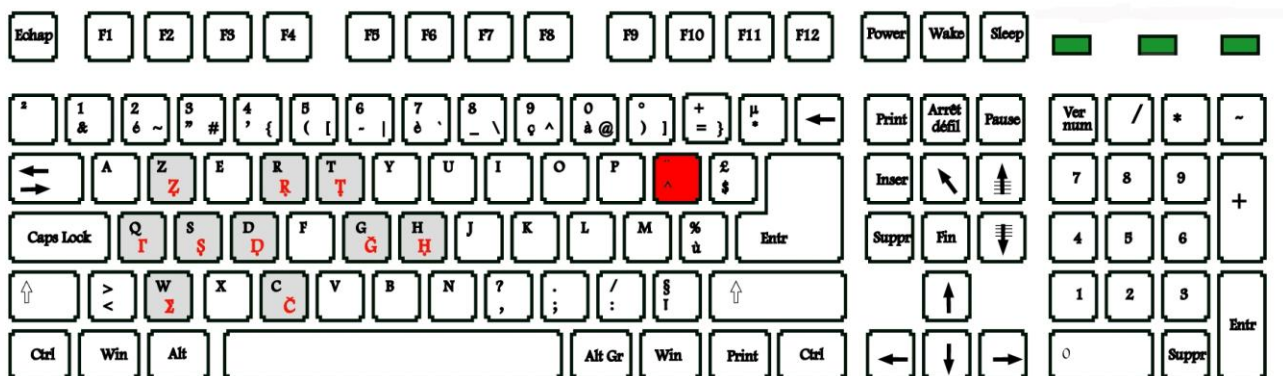


D ayagi i yehwağ «**anasunic**» i wakken ad yeddu yef uselkim. Ad d-iban unasiw amecṭuḥ deg wadda ayeffus neɣ azelmaḍ n ugdil, ad yefren usenselkam tutlayt akked tsefsit, ad yebdu tira s tmaziɣt.

**Tamawt** : Ma tfernem «**Langue d'entrée par défaut**» d «**Français (France)**»-**Tamazight Unicode**-, ad tarum tamaziɣt akked tefransist s unuḍaf n unasiw «**anasunic**» war ma tbeddlem kra.

Tzemrem ad tarum s tsefsayin Unicode akked tid ibeddun s «Amazigh ... yesεan isekkilen «**ε**» akked «**Ε**» deg-sent, am Amazigh Bangle, Amazigh Garamond... akked Amazigh Footlight MT Light.

- Panneau de Configuration
- Options Régionales et linguistiques
- Langues
- Détails
- Langue d'entrée par défaut



Tarusi n yisekkilen yef unasiw Unicode «**unicber.msi**» (Win XP) akked «**anasunic**» (Win XP, Win Vista, Win 7, Win 8).