

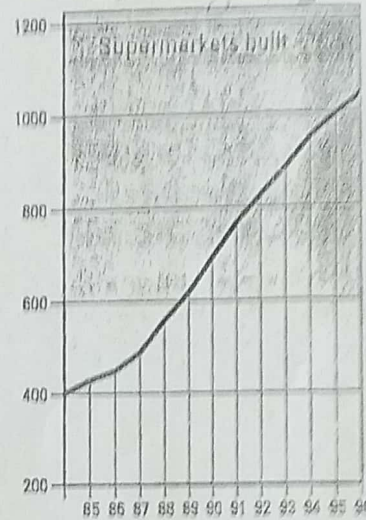
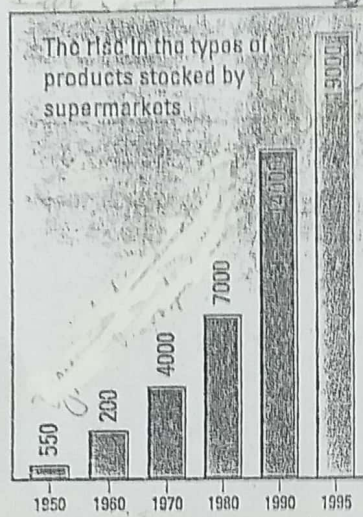
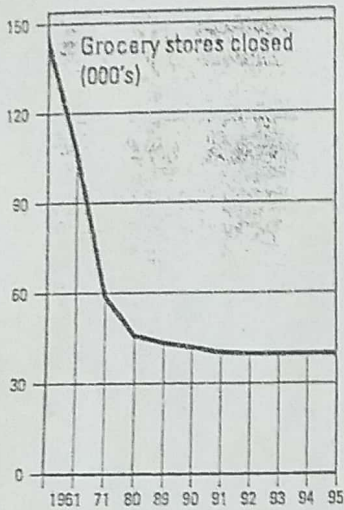
10 Now include the number of car owners in both sentences. (This may mean that you have to re-organise your sentence.)

11 Write a fuller description of the graph at the beginning of this unit.

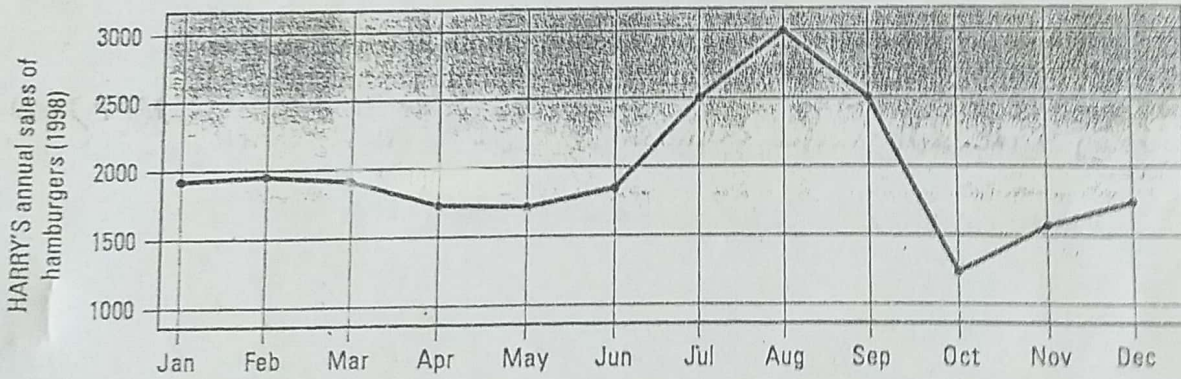


For further practice, do Exercise A in the Supplementary activities on page 115.

12 Write one sentence that describes what each of the graphs below is about. Then describe the trends that you can see in each graph.



13 What does the graph below show?



14 How is this graph different from the ones you have looked at so far?

15 Why do you think this information was presented on a line graph?

16 What tense will you use to describe it?

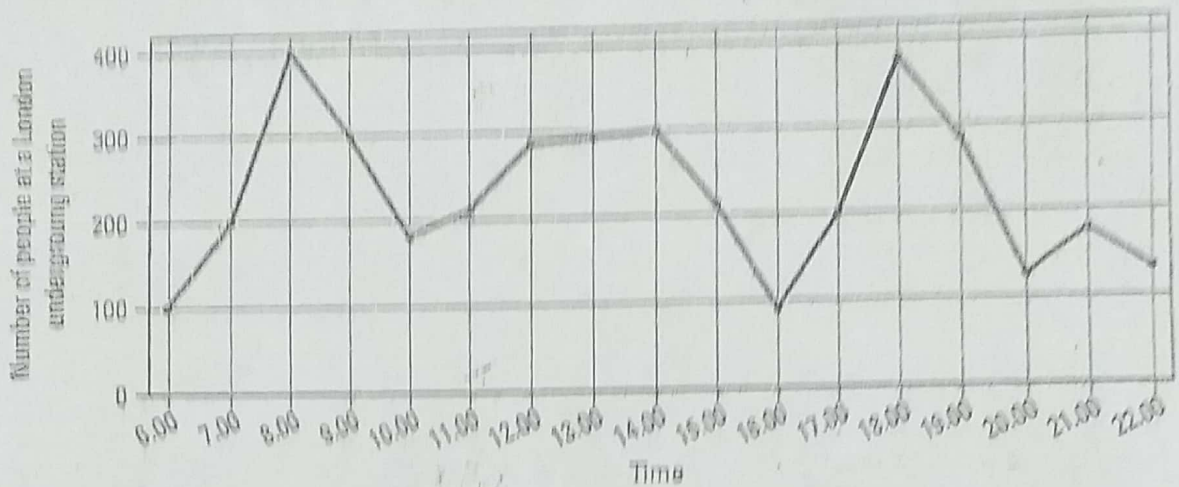
17 Write four sentences about the trends you can see in the above graph. See how many different types of structures your class can produce and write them all down. Practise using the words *stable*, *fewer*, *rise*, *sales*, *peak*, *drop*, *popular*.

TEST TIP

You could write twelve sentences about this graph - one for each month. But if you do that you will not be describing the 'trends' and your answer will be very repetitive. Your examiner will be checking to see whether you can describe the important features of the graph.

Follow-up

- What is being shown in the graph below?



- Read the following description of the graph above.

At 6 a.m. the station had 100 people. At 8 a.m. it had a big increase to 400 people. Not many people were there at 10 a.m. The same thing happened after 8 p.m. It declined a lot to 120 and 180 people at 9 p.m. and 10 p.m. respectively. Between 12 noon and 2 p.m. the number of people was stabilised at 300.

- Discuss what is wrong with the above paragraph, then write your own paragraph, making improvements. A model answer, one of many possible versions, is given on page 182.



For further practice, do the IELTS task, Exercise B of the Supplementary activities on page 116.

L