

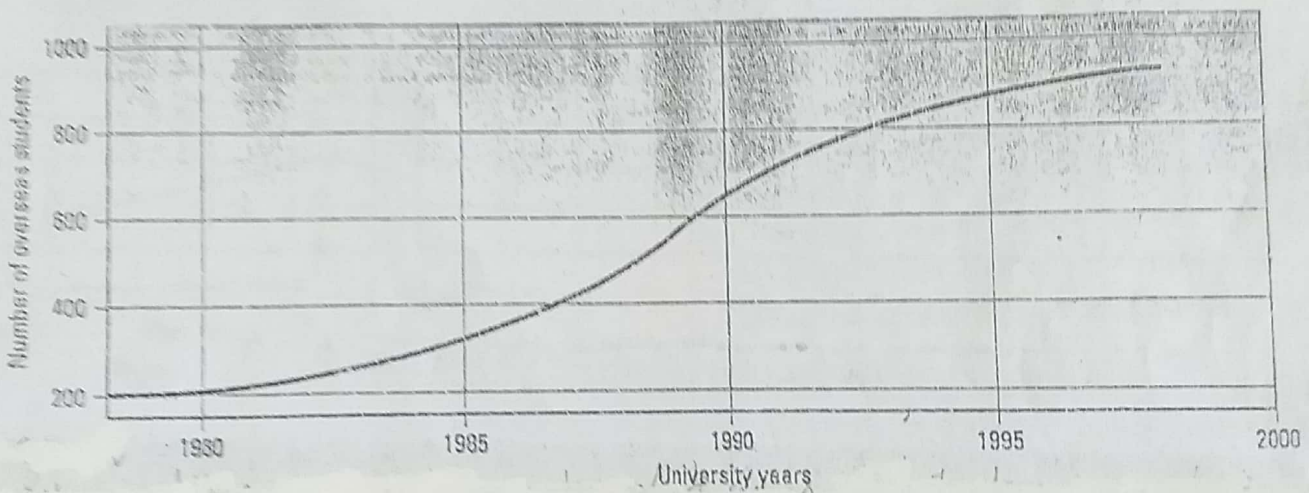
Writing

UNIT 2 Describing trends

Line graphs are used to show a trend or pattern which usually takes place over a period of time. It is important to look at the overall pattern on a line graph as well as the significant features within it.

LINE GRAPHS

1 What information is being shown in the graph below?



2 Here are two simple descriptions of the graph:

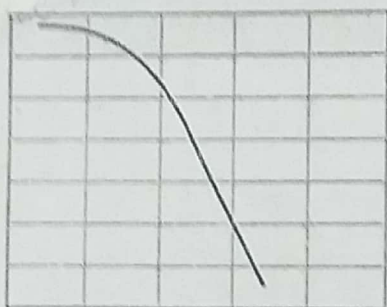
*The number of overseas students studying at the university has risen. Or
The graph shows an increase in the number of overseas students at the university.*

Add 'considerably' to the first sentence and 'considerable' to the second sentence.
What effect does this word have?

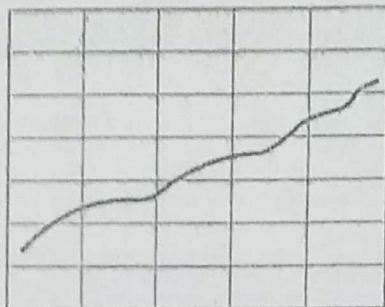
3 Here are some words and phrases to help you describe trends:

nouns	adjectives and adverbs	phrase
a rise	sharp(ly) / dramatic(ally)	remain the same
an increase	considerable(ly)	reach a plateau
a fall	steady(ily)	remain stable
a drop	slight(ly) / gentle(ly)	remain/stay constant
a decline	gradual(ly)	reach a peak
a peak/dip	relative(ly)	hit/fall to the lowest point

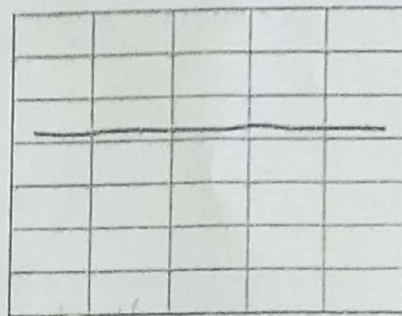
Using some of the words and phrases on the previous page, describe the pattern in each graph below.



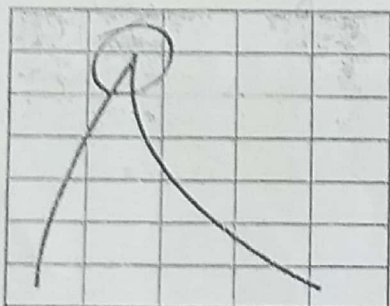
a ... a sharp fall



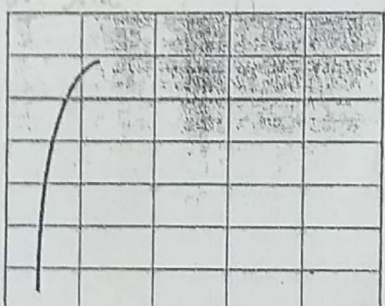
b ...



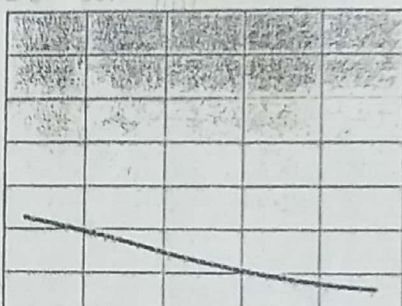
c ...



d ...



e ...



f ...

4 Describe each pattern using a verb, e.g. a It falls sharply.

EXAMINING THE AXES

TEST TIP

You must show the examiner that you know what the two axes represent but you do not need to describe these axes in your answer. If you say: The number of cars has increased dramatically OR Car ownership has increased from 2 to 20, you will lose marks because the information is incomplete or inaccurate.

This trend looks very simple but think about it before you describe it.

- 5 Is the graph about people or vehicles?
- 6 What do the numbers along the horizontal axis represent?
- 7 What do the numbers on the vertical axis represent?
- 8 Write a short, general statement about car ownership in Britain.
- 9 Now include the time period. Use:
a since 1960 b (over a 40-year period) between 1960 and 2000

